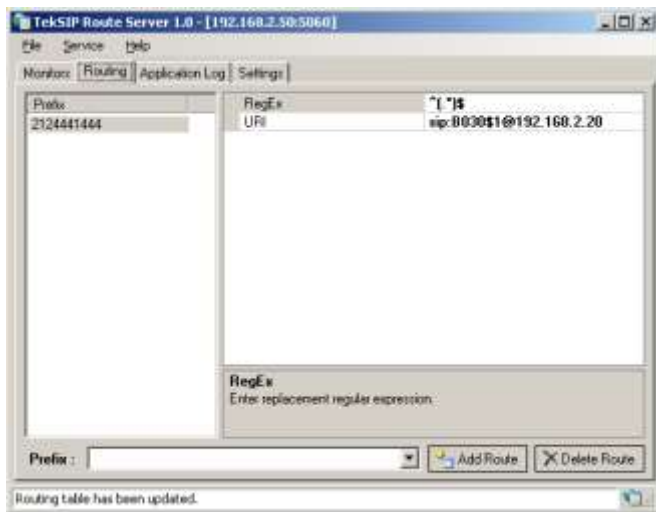


TSRServer - SIP Redirect Server for Windows

TekSIP Route Server is an SIP Redirect Server (Based on RFC 3261) runs under Windows (XP, Vista, 7/8, 2003-2008-2012 Server) and can be used as a routing server for a SIP network. TekSIP Route Server can be run with built-in Microsoft Access database or an external Microsoft SQL Server database. All Microsoft SQL Server editions are supported. TekSIP Route Server also supports ENUM.

TekSIP Route Server can be run with built-in Microsoft Access database or an external Microsoft SQL Server database. All Microsoft SQL Server editions are supported. TekSIP Route Server also supports ENUM.

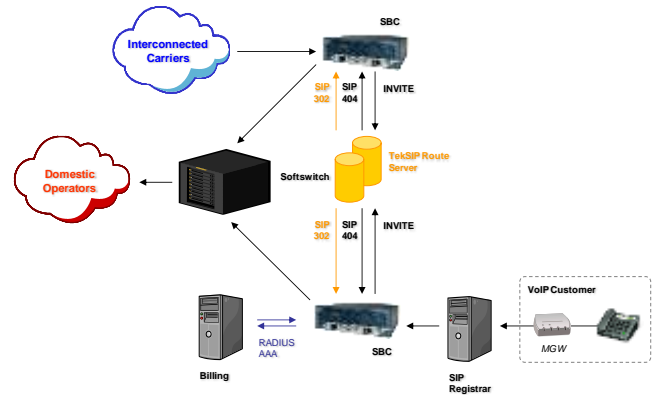


TSRServer - Routing Tab

Major Features

- o Supports features described in RFC 3261.
- o Logs system messages, errors and session information to a log file.
- o All parameters can be configured through management GUI or HTTP interface.
- o You can define a default route or prefix based routes for particular SIP endpoints.
- o Stores configuration data in the installation directory (.ini file).
- o Supports Access (MDB) and Microsoft SQL Server.
- o Supports ENUM.
- o Quick and easy installation.
- o Runs as a Windows service.

You can define resource records or routes for a particular E.164 number or a prefix in "Routing" tab.



TSRServer - Number Portability Application Network Diagram

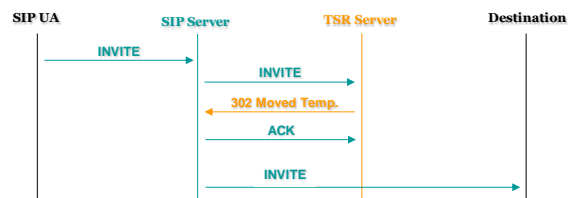
TekSIP Route Server also utilizes Windows Performance Monitor providing numerous counters;

- o Used Memory
- o Number of Items in Memory Cache
- o Number of SIP Requests Received
- o SIP Requests Receive Rate
- o Number of Successful Processed SIP Requests
- o Number of Replies from Memory Cache
- o Number of Failed SIP Requests

You can add and monitor them using Windows Performance Monitor (Perfmon.exe). You can also monitor these counters through TekSIP Route Server Manager and web monitoring interface.

Typical Message Flow

TekSIP Route Server returns 302 responses for located SIP destinations. If a route cannot be located for an incoming SIP call, a 404 response will be returned.



System Requirements

1. A Windows system with at least 2048 MB of RAM and 10 MB of disk space for installation. Intel Xeon 4xCore CPU is recommended for +50 CAPS traffic.
2. Microsoft.NET Framework 4.0 Client Profile (Min.)
3. Microsoft SQL Server (2003/2008).
4. Administrative privileges.

Supported Standards

RFC 3261 SIP: Session Initiation Protocol

RFC 3262 Reliability of Provisional Responses in the Session Initiation Protocol (SIP)

 **Kaplan Bilişim Teknolojileri Yazılım ve Ticaret Ltd.**

Büyükdere Cd. 67-71 K:9 Mecidiyeköy, Şişli, 34387, İstanbul

Phone: +90 (212) 356 12 12, E-mail: info@kaplansoft.com / sales@kaplansoft.com