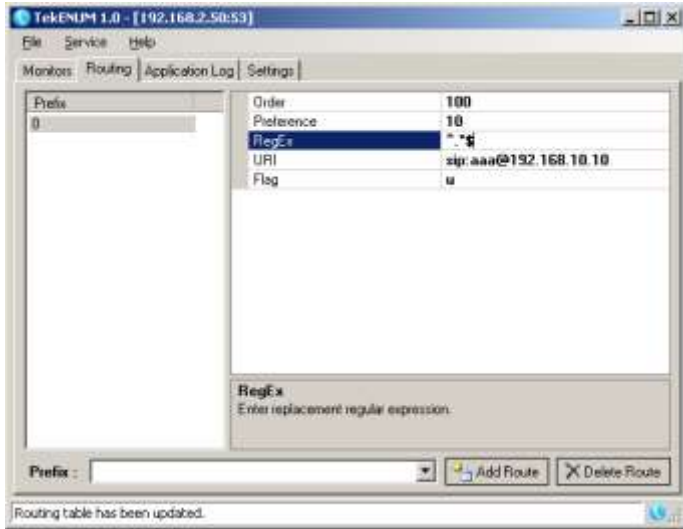


# TekENUM - ENUM Server for Windows

TekENUM is a ENUM [The E.164 to Uniform Resource Identifiers (URI) Dynamic Delegation Discovery System (DDDS) Application (ENUM)] server (Based on RFC 3761) runs under Windows (XP, Vista, Windows 7/8, 2003/2008/2012 Server).



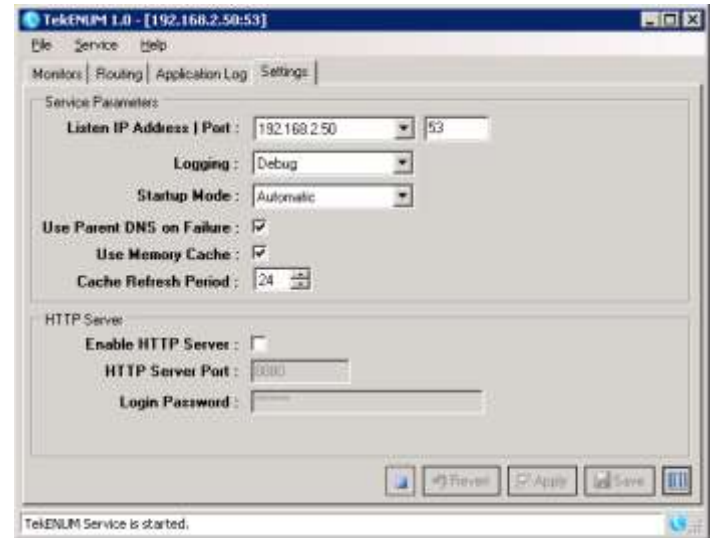
TekENUM - Routing Tab

## Major Features

- Supports features described in RFC 3761.
- Logs system messages, errors and session information to a log file.
- All parameters can be configured through management GUI or HTTP interface.
- You can define a default route or prefix based routes for particular SIP endpoints.
- Can act as a DNS Proxy for undefined ENUM endpoints as well as unsupported DNS query types.
- Access (MDB) and Microsoft SQL support.
- Runs as Windows service.

You can define resource records or routes for a particular E.164 number or a prefix in "Routing" tab.

You can have also a default route entry. TekENUM chooses longest match prefix route. If any match cannot be found default route is chosen if exists. You can have just one resource record per prefix or per E.164 entry.



TekENUM - Service Parameters

## System Requirements

1. A Windows system with 2 GB of RAM.
2. Microsoft.NET Framework 4.0 Client Profile
3. 10 MBytes of disk space.
4. Administrative privileges.

## Supported Standards

**RFC 3761** The E.164 to Uniform Resource Identifiers (URI) Dynamic Delegation Discovery System (DDDS) Application (ENUM)

**KaplanSoft** Kaplan Biliřim Teknolojileri Yazılım ve Ticaret Ltd.

Büyükdere Cd. 67-71 K:9 Mecidiyeköy, Şişli, 34387, İstanbul

Phone: +90 (212) 356 12 12, E-mail: info@kaplansoft.com / sales@kaplansoft.com