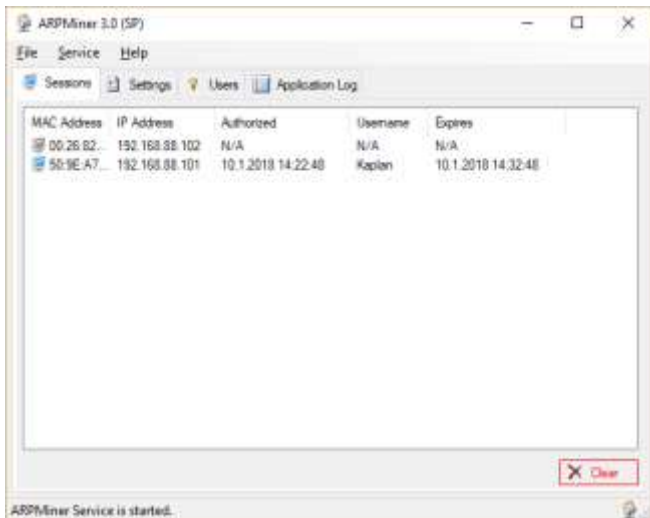


# ARPMiner - HotSpot for Windows

ARPMiner is a multi-purpose access control software runs under Windows (Vista/7/8/10, 2008-2016 Server).

ARPMiner consists of a GUI and a service application called TekSpot. TekSpot has its own built-in PPPoE, HTTP, DHCP server and a proxy DNS server. TekSpot uses its built-in NAT engine. RADIUS AAA and PPP encryption are supported in only SP edition.



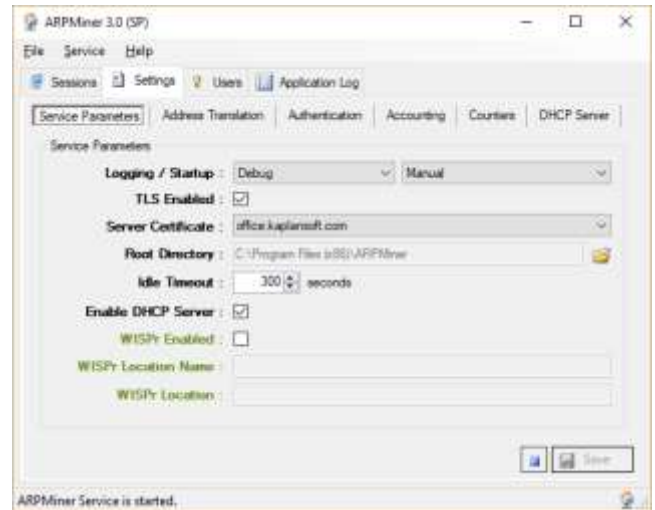
ARPMiner - Users

ARPMiner supports three modes of operation for access control; Network Address Translation (NAT), bridge mode and PPPoE server mode. Bridge operation mode enables you to perform access control for the private network without any topology change in your network

## Major Features

- Simple design and easy to use user interface.
- Simple interface for user definitions.
- Real time monitoring of connected users.
- NAT and bridge operation modes for HotSpot Captive Portal.
- PPPoE Server with MPPE (40/128 bits) Encryption.
- PAP, CHAP, MS-CHAP-v1/v2 authentication methods.
- Built-in HTTP server with enhanced SSL and CGI/1.1 support, built-in DHCP server and DNS proxy.
- RADIUS AAA support (Commercial editions only). ARPMiner accepts Packet of Disconnect (PoD) from RADIUS servers.
- WISPr authentication and partial RADIUS dictionary support.
- Customizable HTTP interface
- Performance monitoring through Windows Performance Monitor.

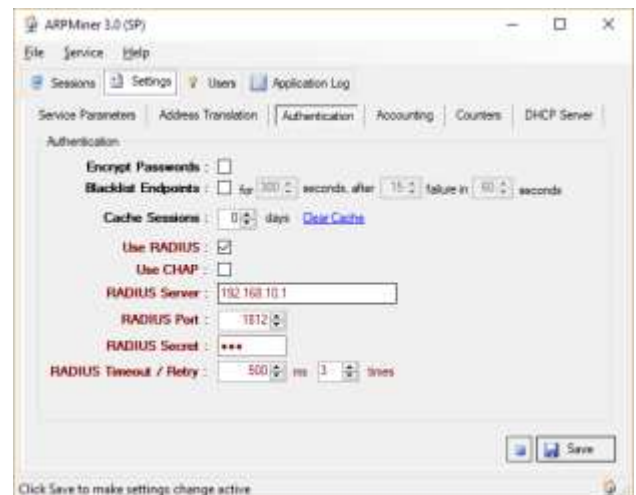
You can use your own defined login, info and error pages. ARPMiner uses built in html resources for this pages. ARPMiner looks for alternative login.html, info.html and error.html files. If any of them found, ARPMiner uses user defined html file. You can also run CGI scripts (.php, .pl, .bat, .vbs, etc) placed in HTTP root directory of ARPMiner.



ARPMiner - Service Parameters

ARPMiner RADIUS authentication request packets contains following RADIUS attributes;

- User-Name
- User-Password or CHAP-Password
- NAS-IP-Address
- Calling-Station-Id (User Ethernet MAC address)



ARPMiner - Authentication Parameters

ARPMiner expects following RADIUS attributes in an Access-Accept reply;

- Session-Timeout
- Idle-Timeout

ARPMiner recognizes following RADIUS attributes in PPPoE Server Operation Mode;

- MS-MPPE-Encryption-Types
- MS-CHAP2-Success
- MS-CHAP-MPPE-Keys
- MS-MPPE-Send-Key
- MS-MPPE-Recv-Key
- MS-Primary-DNS-Server
- MS-Secondary-DNS-Server
- MS-Primary-NBNS-Server
- MS-Secondary-NBNS-Server

ARPMiner RADIUS accounting start packets contains following RADIUS attributes;

- Acct-Status-Type = Start
- Calling-Station-Id
- Called-Station-Id
- NAS-IP-Address
- Framed-IP-Address
- Acct-Session-Id
- User-Name

MAC Address	IP Address	Authorized	Username	Expires
50:9E:A7...	192.168.88.101	10.1.2018 14:22:48	Kaplan	10.1.2018 14:32:48
90:1A:4...	192.168.88.102	N/A	N/A	N/A

ARPMiner - Active Sessions

ARPMiner RADIUS accounting stop packets contains following RADIUS attributes;

- Acct-Status-Type = Stop
- Acct-Terminate-Cause
- Acct-Session-Time
- Acct-Input-Octets
- Acct-Output-Octets
- Framed-IP-Address
- Calling-Station-Id
- Called-Station-Id
- NAS-IP-Address
- Acct-Session-Id
- User-Name

ARPMiner accepts Packet of Disconnect from RADIUS servers.

## System Requirements

1. A Windows system with 2 GB of RAM.
2. Microsoft.NET Framework 4.6.10
3. 8 MB of disk space.
4. One Ethernet interface for Private (Hotspot) zone and another for the Internet (Public) connection.
5. Administrative privileges.

## Supported Standards

**RFC 1034** Domain Names - Concepts and Facilities

**RFC 1661** The Point-to-Point Protocol (PPP)

**RFC 2131** Dynamic Host Configuration Protocol

**RFC 2516** A Method for Transmitting PPP Over Ethernet (PPPoE)

**RFC 2616** Hypertext Transfer Protocol -- HTTP/1.1

**RFC 2548** Microsoft Vendor-specific RADIUS Attributes

**RFC 2616** Hypertext Transfer Protocol -- HTTP/1.1

**RFC 2865** RADIUS Authentication

**RFC 2866** RADIUS Accounting

**RFC 3078** Microsoft Point-To-Point Encryption (MPPE) Protocol

**RFC 3079** Deriving Keys for use with Microsoft Point-to-Point Encryption (MPPE)

**RFC 3875** The Common Gateway Interface (CGI) Version 1.1

**KaplanSoft** Kaplan Bilişim Teknolojileri Yazılım ve Ticaret Ltd.

Büyükdere Cd. 67-71 K:9 Mecidiyeköy, Şişli, 34387, İstanbul

Phone: +90 (212) 356 12 12, E-mail: info@kaplansoft.com / sales@kaplansoft.com