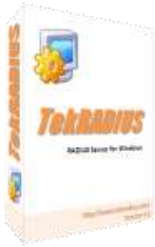


TekRADIUS - RADIUS Server for Windows



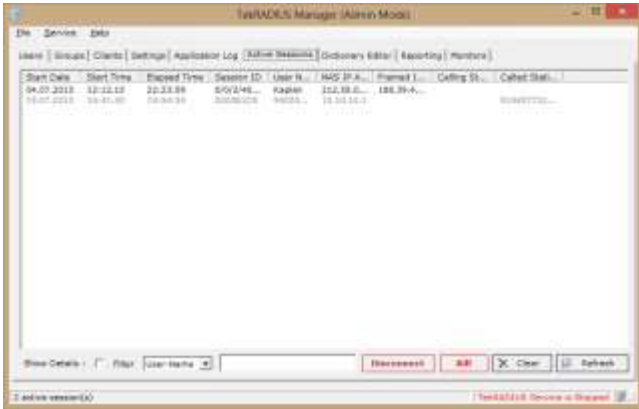
TekRADIUS is a RADIUS server for Windows with built-in DHCP server. TekRADIUS is tested on Microsoft Windows, Vista, Windows 7/8/10 and Windows 2008-2016 server.

TekRADIUS complies with RFC 2865 and RFC 2866. TekRADIUS has two editions; TekRADIUS (First edition; supports Microsoft SQL Server) and TekRADIUS LT (Second edition; supports SQLite). It runs as a Windows Service and comes with a Win32 management interface.

Major Features

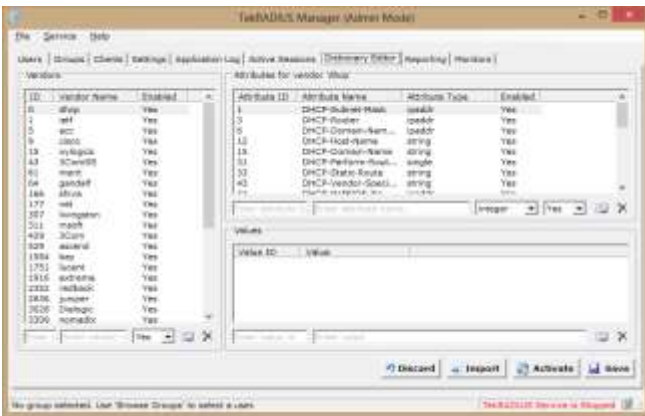
- Supports features described in RFC 2865 and RFC 2866 (RADIUS protocol).
- Supports TCP (RFC 6613) and TLS (RFC 6614-RadSec) transports.
- Logs system messages, errors and session information to a log file rotated daily.
- Limits number of simultaneous sessions for the users.
- Uses Authentication method as a RADIUS check item.
- RADIUS Dictionary can be edited through TRManager GUI.
- Authentication and Accounting ports are user selectable.
- You can create SQL database and tables through TRManager GUI.
- You can map RADIUS accounting attributes to Accounting table fields.
- TekRADIUS can be run in Authentication only or Authorization only mode.
- You can define which RADIUS attribute will use for User-Name substitute.
- You can define own Authorization query string.
- PAP, CHAP, MS-CHAP v1-v2, EAP-MD5, EAP-TLS, EAP-SIM, EAP-MS-CHAP v2, LEAP, PEAP (PEAPv0-EAP-MS-CHAP v2), EAP-TTLS and Digest (draft-sterman-aaa-sip-00.txt) authentication methods are supported.
- TekRADIUS can proxy RADIUS requests to other RADIUS servers.
- TekRADIUS supports IPv6 attributes.
- Generates MS-MPPE Keys for VPN connections.
- Supports OTP (One Time Password) authentication based RFC 2289.
- Built-in DHCP server.
- You can specify an Expire Date and Time Quota for the users.
- You can authenticate users against Windows Domain or Active Directory.
- Command line utility for adding, deleting and editing users and RADIUS clients.
- Simple reporting interface for browsing Accounting records.
- Disconnects users with Packet of Disconnect (Pod) or user defined kill command.
- You can specify how much time user account will be valid after the first logon (Time-Limit) and you can specify allowed logon days and hours (Login-Time).
- Disabling user profile after user configurable number of unsuccessful login attempts.
- You can specify credit limits for daily, weekly or monthly periods.
- You can run and check result of an external executable as a check item.
- Quick and easy installation.

You can use TekRADIUS' built-in DHCP server to assign IP addresses to your wired or wireless devices on your network. Commercial editions of TekRADIUS provide a unique feature; assignment of static IP addresses to wired/wireless clients authenticated using EAP authentication.



TekRADIUS - Active Sessions

TekRADIUS also supports RFC 2868 - RADIUS Attributes for Tunnel Protocol Support and RFC 3079 - Deriving Keys for use with Microsoft Point-to-Point Encryption (MPPE). You can authenticate and authorize PPTP/L2TP connections using TekRADIUS.



TekRADIUS - RADIUS Dictionary

TekRADIUS provides user level restriction to GUI access. Windows users in "Administrators" group can access to all functions on TekRADIUS Manager GUI but Windows users in built-in "Users" group can access restricted set of functions on TekRADIUS Manager GUI.

Please see TekRADIUS SP Rate Editor Manual for TekRADIUS SP features.

System Requirements

1. A Windows system with 2 GB of RAM.
2. Microsoft.NET Framework 4.6.1 (Min.)
3. 10 MB of disk space.
4. Administrative privileges.

Supported Standards

- RFC 2131** Dynamic Host Configuration Protocol
- RFC 2246** The TLS Protocol Version 1.0
- RFC 2548** Microsoft Vendor-specific RADIUS Attributes
- RFC 2617** HTTP Authentication: Basic and Digest Access Authentication
- RFC 2865** RADIUS Authentication
- RFC 2866** RADIUS Accounting
- RFC 2867** RADIUS Accounting Modifications for Tunnel Protocol Support
- RFC 2868** RADIUS Attributes for Tunnel Protocol Support
- RFC 2869** RADIUS Extensions
- RFC 3162** RADIUS and IPv6
- RFC 3579** RADIUS (Remote Authentication Dial In User Service) Support for Extensible Authentication Protocol (EAP)
- RFC 3580** IEEE 802.1X Remote Authentication Dial In User Service (RADIUS) Usage Guidelines
- RFC 4346** The TLS Protocol Version 1.1
- RFC 4603** Additional Values for the NAS-Port-Type Attribute
- RFC 4818** RADIUS Delegated-IPv6-Prefix Attribute
- RFC 5281** EAP-TLSv0
- RFC 5246** The TLS Protocol Version 1.2
- RFC 6613** RADIUS over TCP
- RFC 6614** Transport Layer Security (TLS) Encryption for RADIUS
- RFC 6911** RADIUS Attributes for IPv6 Access Networks
- draft-kamath-pppext-eap-mschapv2-02.txt** Microsoft EAP CHAP Extensions
- draft-kamath-pppext-peapv0-00.txt** Microsoft PEAP version 0 (As implemented in Windows XP SP1')