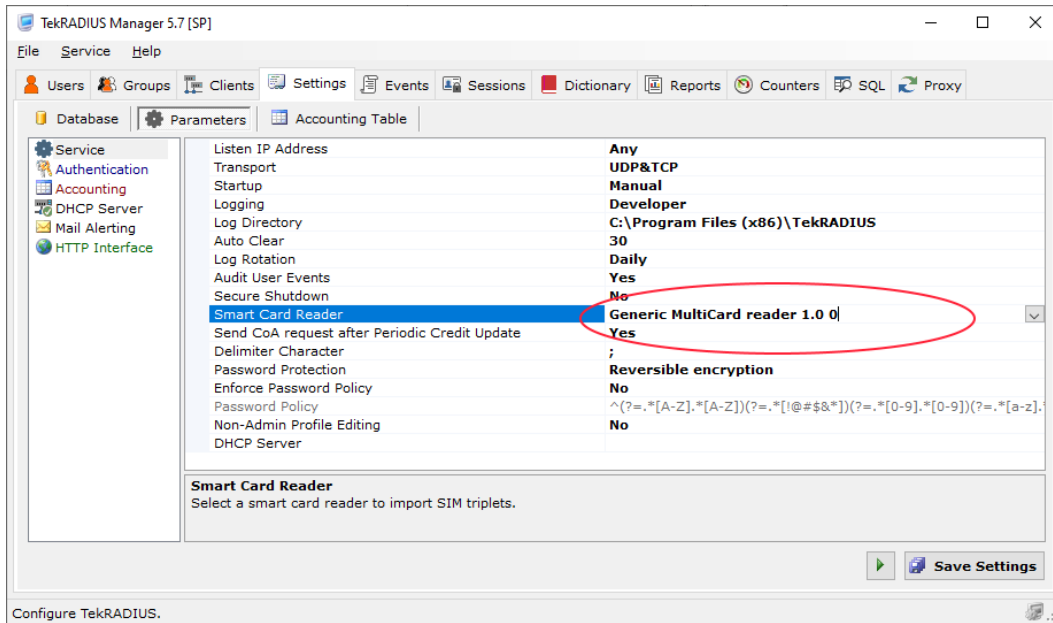
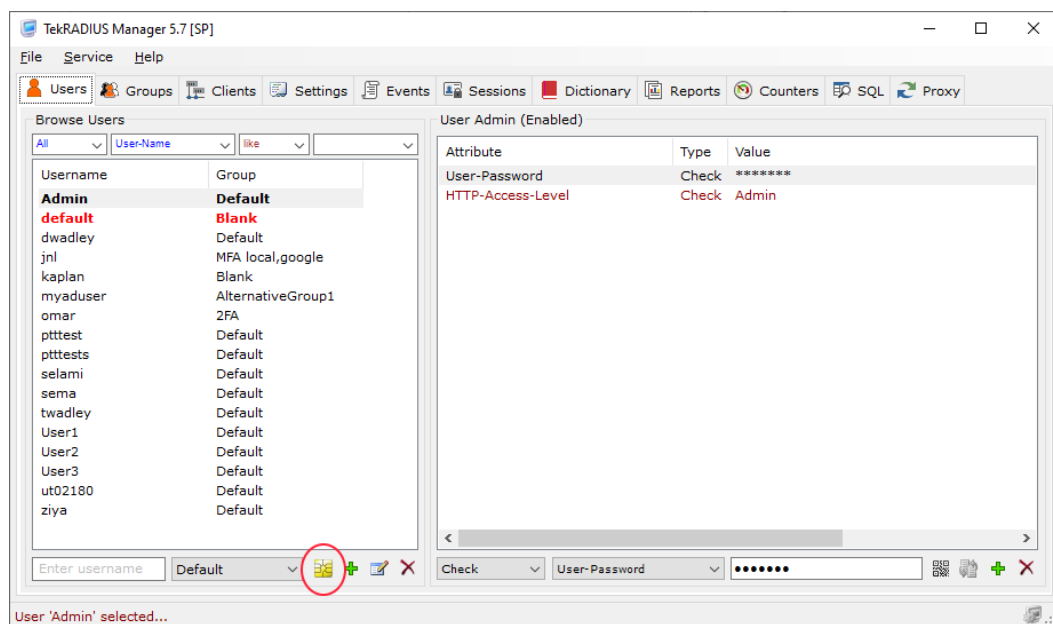


## EAP-SIM Authentication

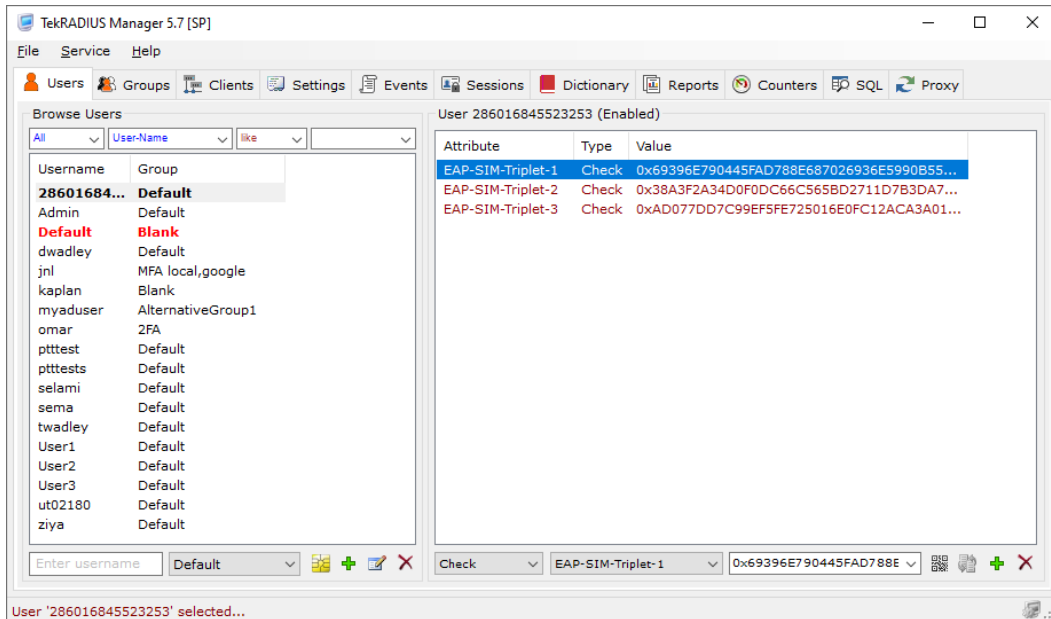
TekRADIUS supports many EAP authentication methods including EAP-SIM. EAP-SIM allows authentication using credentials fetched from SIM cards. TekRADIUS Manager GUI allows you to import SIM credentials from a SIM card. This requires a SIM card reader installed on the TekRADIUS Installed machine. TekRADIUS detects installed SIM card reader on your system and allows you to select SIM card reader to be used for importing SIM credentials. You can set SIM card reader through TekRADIUS Manager / Settings / Parameters / Service / Smart Card Reader:



TekRADIUS Manager will activate Import SIM Triplets button on the Users tab when you set a SIM card reader;



TekRADIUS will create a user profile for IMSI and add fetched SIM triples into the user profile;



You can try to authenticate a mobile device by installing the SIM card to the mobile device. Mobile device must support EAP-SIM authentication method. Most Android mobile phones supports EAP-SIM authentication. Select EAP-SIM authentication method while connection to the wireless network with WPA-Enterprise enabled.

### Add network

Network name (SSID)

Enter the SSID

---

Security

802.1x EAP

EAP method

SIM

Advanced options

CANCEL

SAVE