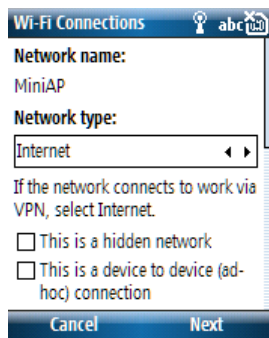


Connecting to a Wireless Network Using WPA and PEAP Authentication



Go to Wireless Manager / Wireless Settings.

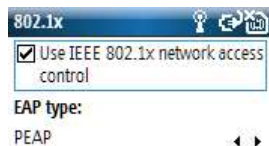
Select wireless network to connect, select connect or select “Edit” from menu option.



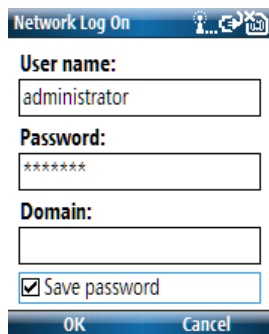
Set Network type to “Internet”



Set “Authentication” to WPA and “Data Encryption” to TKIP then select Next.



Check “Use IEEE 802.1x network access control” and set “EAP type” to PEAP and select finish.



Enter username and password to connect.