

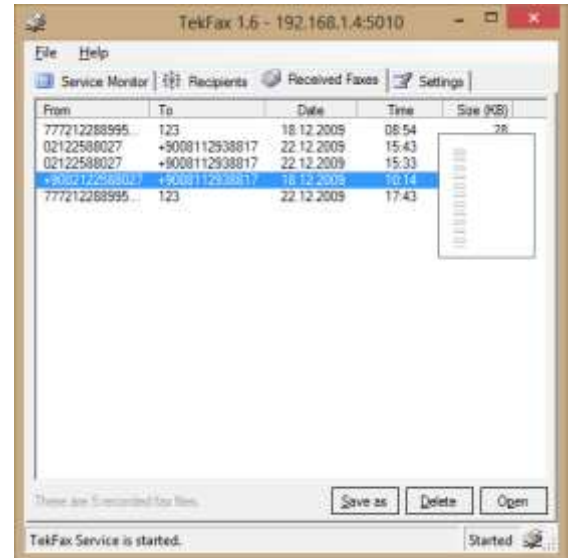
TekFax - T.38 Fax Receiver for Windows

TekFax is a SIP (Session Initiation Protocol) fax receiver server (Based on RFC 3261) runs under Windows (Windows XP, Vista, 7/8/10, 2003-2016 Server).

Major Features

- o Simple, easy to use interface.
- o Supports NAT traversal. TekFax also supports UPnP.
- o Forwarding incoming faxes to configured recipients via e-mail in TIFF format.
- o Monitoring active SIP calls in real-time.
- o Supports, UDP, TCP and TLS transports.
- o TekFax can recover single packet T.4 image data losses if remote T.38 endpoint sends redundant T.4 data.
- o HTTP interface.

TekFax uses UDP port 5012 and above for T.38 traffic. You need to add necessary mappings to your router for incoming T.38 traffic if TekFax installed behind a NAT gateway which does not support UPnP.

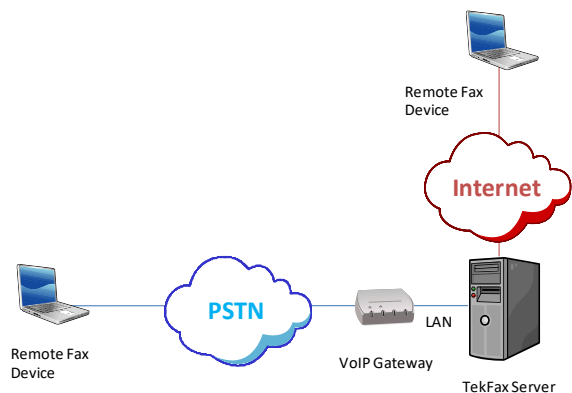


TekFax - Received faxes

You can have a "Default" endpoint to receive recorded faxes to a default e-mail account. Enter Default as Endpoint ID.

Typical Usage Scenario

You can receive incoming faxes from PSTN via a VoIP gateway which supports T.38 protocol or if you have a VoIP account you can directly receive faxes through Internet if your provider supports T.38 protocol.

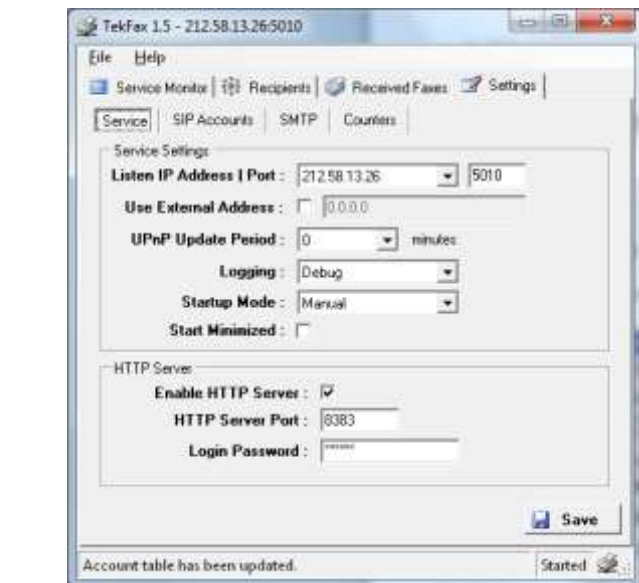


TekFax - Typical Usage Scenario

You can monitor active calls through service monitor tab. You can define recipients and their e-mail address for forwarding recorded faxes through Recipients tab.

Configure your VoIP gateway to forward fax calls to TekFax server.

TekFax provides many messages when problems occur. You can see error messages on TekFax Status bar or in the



TekFax - Service Parameters

log file of TekFax service. You can enable logging in Settings Tab. There are three levels of logging; None, Errors, Sessions. If you select Errors TekFax logs just error messages. If you select Sessions both Session and Error messages will be logged. You have to save or apply settings changes if you change logging level setting. Log files are located under <Application Directory>\Logs directory.

Recorded faxes are saved under Faxes subdirectory of TekFax application directory.

System Requirements

1. A Windows system with 2 GB of RAM.
2. Microsoft.NET Framework 4.0 Client Profile
3. 10 MB of disk space.
4. Administrative privileges.

Supported Standards

RFC 2617 HTTP Authentication: Basic and Digest Access Authentication

RFC 2782 A DNS RR for specifying the location of services (DNS SRV)

RFC 2976 SIP INFO Method

RFC 3261 SIP: Session Initiation Protocol

RFC 3262 Reliability of Provisional Responses in the Session Initiation Protocol (SIP)

RFC 3551 RTP Profile for Audio and Video Conferences with Minimal Control

RFC 3891 The Session Initiation Protocol (SIP) "Replaces" Header

ITU Recommendation T.38

 **Kaplan Bilişim Teknolojileri Yazılım ve Ticaret Ltd.**

Büyükdere Cd. 67-71 K:9 Mecidiyeköy, Şişli, 34387, İstanbul

Phone: +90 (212) 356 12 12, E-mail: info@kaplansoft.com / sales@kaplansoft.com