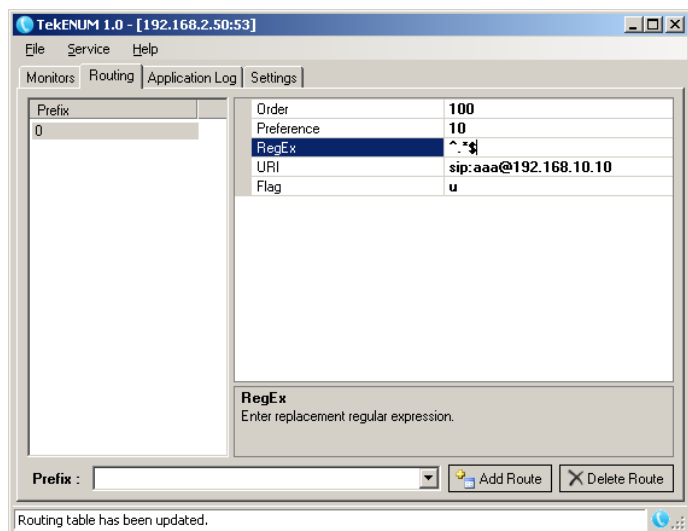


TekENUM - ENUM Server for Windows

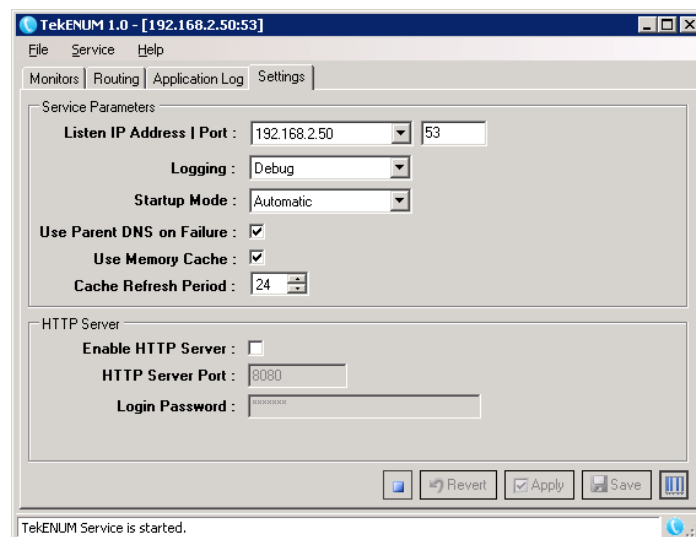
TekENUM is a ENUM [The E.164 to Uniform Resource Identifiers (URI) Dynamic Delegation Discovery System (DDDS) Application (ENUM)] server (Based on RFC 3761) runs under Windows (Vista, Windows 7/8/19/11, 2008-2022 Server).



TekENUM - Routing Tab

You can define resource records or routes for a particular E.164 number or a prefix in "Routing" tab.

You can have also a default route entry. TekENUM chooses the longest match prefix route. If any match cannot be found the default route is chosen if exists. You can have just one resource record per prefix or per E.164 entry.



TekENUM - Service Parameters

Major Features

- Supports features described in RFC 3761.
- Logs system messages, errors and session information to a log file.
- All parameters can be configured through management GUI or HTTP interface.
- You can define a default route or prefix based routes for particular SIP endpoints.
- Can act as a DNS Proxy for undefined ENUM endpoints as well as unsupported DNS query types.
- Local database and Microsoft SQL support.
- Runs as Windows service.

System Requirements

1. A Windows system with 4 GB of RAM.
2. Microsoft.NET Framework 4.0 Client Profile
3. 20 MB of disk space.
4. Administrative privileges.

Supported Standards

RFC 3761 The E.164 to Uniform Resource Identifiers (URI) Dynamic Delegation Discovery System (DDDS) Application (ENUM)

KaplanSoft Kaplan Bilişim Teknolojileri Yazılım ve Ticaret Ltd.

Büyükdere Cd. 67-71 K:9 Mecidiyeköy, Şişli, 34387, İstanbul

Phone: +90 (212) 356 12 12, E-mail: info@kaplansoft.com / sales@kaplansoft.com

© 2011-2023 KaplanSoft - <https://www.kaplansoft.com/>