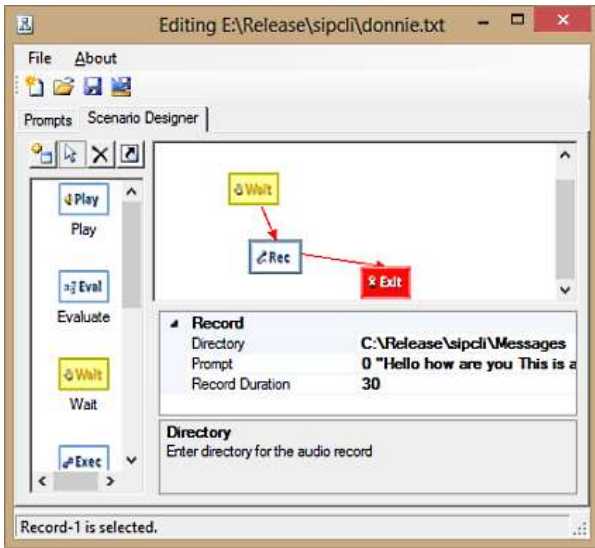


used in your scenario. Prompt and Action definitions for the scenario are stored in text files.



Scenario Editor / Scenarios Tab

System Requirements

SipCLI requires Microsoft .NET Framework 4.0 installed with the latest patches. Pentium class CPU with 2048 MBytes of RAM is ideal for most configurations.

KaplanSoft Kaplan Bilişim Teknolojileri Yazılım ve Ticaret Ltd.

Büyükdere Cd. 67-71 K:9 Mecidiyeköy, Şişli, 34387, İstanbul

Phone: +90 (212) 356 12 12, E-mail: info@kaplansoft.com / sales@kaplansoft.com

Supported SIP RFCs

- **RFC 2617** HTTP Authentication: Basic and Digest Access Authentication
- **RFC 2782** A DNS RR for specifying the location of services (DNS SRV)
- **RFC 2976** SIP INFO Method
- **RFC 3261** SIP: Session Initiation Protocol
- **RFC 3262** Reliability of Provisional Responses in the Session Initiation Protocol (SIP)
- **RFC 3265** Session Initiation Protocol (SIP)-Specific Event Notification
- **RFC 3515** The Session Initiation Protocol (SIP) Refer Method
- **RFC 3550** RTP: A Transport Protocol for Real-Time Applications
- **RFC 3551** RTP Profile for Audio and Video Conferences with Minimal Control
- **RFC 3891** The Session Initiation Protocol (SIP) "Replaces" Header
- **RFC 3892** The Session Initiation Protocol (SIP) Referred-By Mechanism